



灯具参数

灯具型号: ALT-R32-1M-18LEDS-18W-3000K-10X60D

灯具种类: 洗墙灯

光源种类: LED

光源型号: 3030

光源个数: 18

光源光通(lm): 1102.34

发光面长度(m): 1.0

发光面宽度(m): 0.032

发光面高度(m): 0.07

电压: 24.0 V

电流: 0.763 A

功率: 18.312 W

功率因数: 1.000

测试实验室: 广州艾丽特光电科技有限公司

测量模式: Type C

制造商:

光度结果

CIE 分类: 直接型

有效光通量: 999.99 lm

发光效率: 60.1977 lm/W

中心光强: 2570.528cd

最大光强: 2596.421cd

有效光束角(10%Imax): Left: -37.8 Right: 31.8

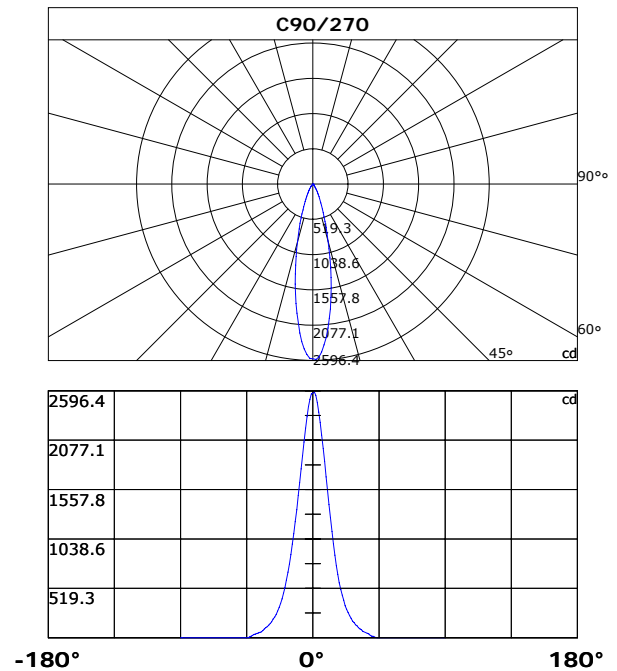
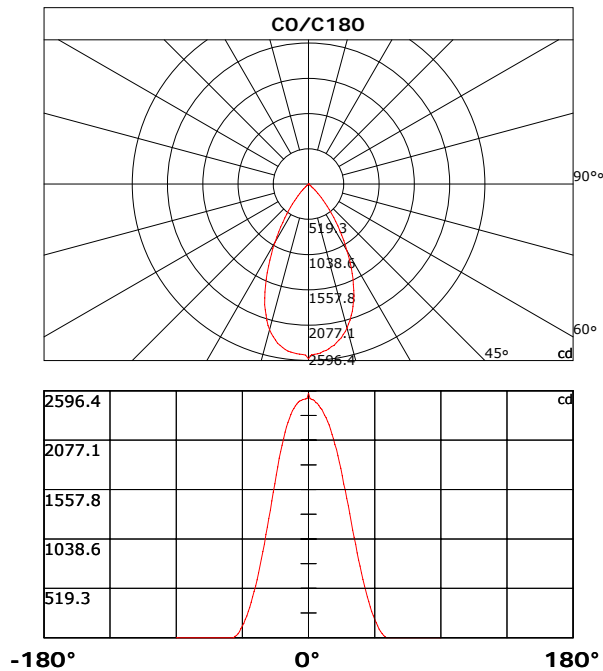
最大光强角度: C:150.0 G:3.0

半峰边角(50%Imax): L: -20.3 R: 16.4

灯具效率: 100.00%

上射光通比: 0.0%

下射光通比: 100.0%





光强分布数据表格 单位[cd]

C\G	G0.0	G1.0	G2.0	G3.0	G4.0	G5.0	G6.0	G7.0	G8.0	G9.0
C0.0	2570.5	2512.9	2506.5	2502.3	2492.9	2471.3	2464.1	2441.9	2416.7	2402.5
C30.0	2570.5	2578.6	2571.9	2547.1	2518.2	2479.7	2424.9	2375.8	2304.4	2230.4
C60.0	2570.5	2582.6	2546.3	2492.6	2416.1	2328.7	2208.6	2089.0	1967.2	1840.2
C90.0	2570.5	2581.5	2546.6	2474.4	2372.5	2264.2	2131.6	1989.4	1852.7	1692.0
C120.0	2570.5	2595.7	2580.5	2533.4	2472.3	2384.7	2272.7	2165.1	2032.1	1913.1
C150.0	2570.5	2581.2	2592.7	2596.4	2581.1	2558.8	2528.1	2484.3	2437.0	2372.0
C180.0	2570.5	2516.5	2509.9	2505.3	2503.7	2494.2	2487.1	2476.3	2457.1	2436.6
C210.0	2570.5	2570.7	2551.4	2524.6	2484.3	2443.5	2386.3	2322.0	2260.7	2186.0
C240.0	2570.5	2577.7	2539.9	2474.4	2388.9	2292.3	2179.3	2067.6	1932.9	1800.4
C270.0	2570.5	2563.6	2508.0	2430.4	2324.4	2201.3	2056.7	1914.5	1774.1	1631.2
C300.0	2570.5	2559.5	2502.8	2430.6	2329.5	2216.1	2104.9	1981.1	1859.4	1719.0
C330.0	2570.5	2537.6	2492.2	2456.2	2393.5	2338.7	2265.6	2189.4	2118.1	2036.2
C360.0	2570.5	2512.9	2506.5	2502.3	2492.9	2471.3	2464.1	2441.9	2416.7	2402.5
C\G	G10.0	G11.0	G12.0	G13.0	G14.0	G15.0	G16.0	G17.0	G18.0	G19.0
C0.0	2370.0	2337.7	2313.5	2272.2	2238.2	2190.5	2139.4	2091.0	2030.5	1980.4
C30.0	2152.8	2062.9	1963.4	1849.0	1740.2	1630.2	1515.5	1418.5	1308.2	1204.9
C60.0	1701.9	1576.1	1449.6	1330.6	1209.7	1090.3	996.3	892.7	810.3	722.2
C90.0	1548.0	1399.2	1264.9	1116.4	982.7	868.1	757.8	667.1	576.4	506.7
C120.0	1771.9	1636.6	1515.3	1388.3	1268.2	1148.4	1035.5	940.7	841.0	745.9
C150.0	2296.9	2217.2	2117.3	2002.1	1889.8	1782.2	1663.5	1561.3	1443.8	1337.9
C180.0	2410.1	2387.4	2346.5	2305.4	2264.9	2218.8	2163.0	2096.4	2023.7	1957.1
C210.0	2102.8	2027.5	1942.9	1860.9	1768.5	1666.0	1584.8	1488.9	1394.4	1298.3
C240.0	1677.2	1551.1	1427.4	1297.3	1190.2	1080.1	979.1	872.4	787.7	701.2
C270.0	1494.5	1345.7	1220.2	1092.9	986.5	872.8	775.4	690.9	607.2	528.3
C300.0	1591.1	1468.6	1346.1	1217.9	1112.6	1006.5	913.3	814.2	725.3	653.9
C330.0	1943.3	1860.5	1778.5	1689.5	1599.6	1504.1	1410.8	1320.7	1240.5	1139.7
C360.0	2370.0	2337.7	2313.5	2272.2	2238.2	2190.5	2139.4	2091.0	2030.5	1980.4
C\G	G20.0	G21.0	G22.0	G23.0	G24.0	G25.0	G26.0	G27.0	G28.0	G29.0
C0.0	1912.4	1844.4	1780.7	1702.0	1617.7	1550.4	1466.2	1389.1	1302.9	1217.9
C30.0	1117.0	1025.1	938.7	858.2	782.2	711.2	639.1	580.2	523.0	462.4
C60.0	641.7	575.8	513.8	454.4	407.8	355.9	316.7	283.1	242.3	221.2
C90.0	447.7	395.5	337.7	299.7	267.2	231.8	204.9	173.2	160.0	136.0
C120.0	675.6	597.1	538.6	474.6	420.5	372.7	328.0	295.7	258.5	223.9
C150.0	1241.5	1152.2	1050.7	962.2	880.5	803.8	725.2	648.2	588.0	525.1
C180.0	1887.3	1794.6	1712.0	1618.4	1531.4	1439.5	1341.6	1253.7	1164.4	1084.1
C210.0	1212.7	1125.4	1044.6	971.2	882.7	813.5	743.9	683.0	616.0	562.2
C240.0	634.4	567.3	493.3	442.4	397.2	350.2	307.5	270.7	241.6	209.0
C270.0	468.1	408.2	362.4	319.1	279.8	243.0	216.2	196.6	167.8	149.8
C300.0	586.9	520.2	458.3	406.4	364.9	322.3	280.7	252.0	219.2	199.9
C330.0	1067.0	989.6	916.5	839.3	765.1	699.9	645.0	581.1	523.3	476.7
C360.0	1912.4	1844.4	1780.7	1702.0	1617.7	1550.4	1466.2	1389.1	1302.9	1217.9



光强分布数据表格 单位[cd]

C\G	G30.0	G31.0	G32.0	G33.0	G34.0	G35.0	G36.0	G37.0	G38.0	G39.0
C0.0	1132.2	1056.0	980.7	892.8	818.6	753.0	680.2	615.3	544.7	485.5
C30.0	421.9	372.1	327.2	293.0	264.4	222.2	198.5	171.5	151.7	128.1
C60.0	191.8	172.1	148.8	133.0	117.8	100.7	88.7	80.2	65.7	58.1
C90.0	125.8	105.1	93.1	83.5	68.0	60.5	53.4	46.6	39.9	25.1
C120.0	198.5	172.1	158.0	137.3	117.7	108.6	92.7	78.9	72.6	59.2
C150.0	473.7	421.4	372.1	333.1	290.7	253.4	224.5	195.2	172.2	143.8
C180.0	987.1	904.6	830.8	754.7	679.0	609.3	543.7	486.1	431.1	373.9
C210.0	505.5	459.7	411.1	366.1	331.2	296.0	267.9	230.7	205.0	180.2
C240.0	190.5	165.8	142.0	128.1	113.0	94.3	87.0	75.5	70.0	56.4
C270.0	132.6	115.0	105.2	92.4	76.5	62.7	57.2	49.1	44.9	38.6
C300.0	169.4	147.2	138.7	117.8	106.5	93.4	77.5	72.1	56.5	53.0
C330.0	434.7	391.9	349.5	308.8	281.5	254.0	222.7	194.9	170.9	152.2
C360.0	1132.2	1056.0	980.7	892.8	818.6	753.0	680.2	615.3	544.7	485.5
C\G	G40.0	G41.0	G42.0	G43.0	G44.0	G45.0	G46.0	G47.0	G48.0	G49.0
C0.0	426.2	377.2	323.5	274.3	232.3	191.1	158.7	125.6	90.0	67.4
C30.0	108.5	92.6	72.6	61.6	44.0	34.5	23.3	11.6	3.7	0.0
C60.0	48.4	43.0	34.8	26.5	22.4	16.1	6.5	4.6	0.0	0.0
C90.0	15.9	15.0	6.5	2.7	0.0	0.0	0.0	0.0	0.0	0.0
C120.0	55.9	40.6	31.1	28.4	18.0	15.0	9.5	0.9	0.0	0.0
C150.0	120.1	102.1	79.5	69.6	53.1	34.9	30.4	15.3	5.5	0.0
C180.0	319.0	276.6	229.3	192.7	151.3	123.5	96.7	63.7	41.5	23.1
C210.0	154.0	133.0	120.8	98.9	84.9	70.1	54.9	43.6	31.4	20.0
C240.0	48.7	38.2	30.4	30.1	23.1	13.2	12.5	1.4	0.0	0.0
C270.0	35.6	26.1	18.0	7.2	0.0	0.0	0.0	0.0	0.0	0.0
C300.0	47.7	31.1	26.9	22.7	14.6	13.6	7.4	3.7	0.0	0.0
C330.0	137.7	115.0	99.1	82.6	69.4	57.2	45.0	34.9	24.0	13.1
C360.0	426.2	377.2	323.5	274.3	232.3	191.1	158.7	125.6	90.0	67.4
C\G	G50.0	G51.0	G52.0	G53.0	G54.0	G55.0	G56.0	G57.0	G58.0	G59.0
C0.0	44.2	25.3	11.6	0.0	0.0	0.0	0.0	0.0	0.0	0.0
C30.0	0.0	0.0	0.0	0.0	0.0	0.0	0.0	0.0	0.0	0.0
C60.0	0.0	0.0	0.0	0.0	0.0	0.0	0.0	0.0	0.0	0.0
C90.0	0.0	0.0	0.0	0.0	0.0	0.0	0.0	0.0	0.0	0.0
C120.0	0.0	0.0	0.0	0.0	0.0	0.0	0.0	0.0	0.0	0.0
C150.0	0.0	0.0	0.0	0.0	0.0	0.0	0.0	0.0	0.0	0.0
C180.0	14.3	0.0	0.0	0.0	0.0	0.0	0.0	0.0	0.0	0.0
C210.0	16.1	5.1	0.0	0.0	0.0	0.0	0.0	0.0	0.0	0.0
C240.0	0.0	0.0	0.0	0.0	0.0	0.0	0.0	0.0	0.0	0.0
C270.0	0.0	0.0	0.0	0.0	0.0	0.0	0.0	0.0	0.0	0.0
C300.0	0.0	0.0	0.0	0.0	0.0	0.0	0.0	0.0	0.0	0.0
C330.0	10.8	3.8	0.0	0.0	0.0	0.0	0.0	0.0	0.0	0.0
C360.0	44.2	25.3	11.6	0.0	0.0	0.0	0.0	0.0	0.0	0.0



光强分布数据表格 单位[cd]

C\G	G60.0	G61.0	G62.0	G63.0	G64.0	G65.0	G66.0	G67.0	G68.0	G69.0
C0.0	0.0	0.0	0.0	0.0	0.0	0.0	0.0	0.0	0.0	0.0
C30.0	0.0	0.0	0.0	0.0	0.0	0.0	0.0	0.0	0.0	0.0
C60.0	0.0	0.0	0.0	0.0	0.0	0.0	0.0	0.0	0.0	0.0
C90.0	0.0	0.0	0.0	0.0	0.0	0.0	0.0	0.0	0.0	0.0
C120.0	0.0	0.0	0.0	0.0	0.0	0.0	0.0	0.0	0.0	0.0
C150.0	0.0	0.0	0.0	0.0	0.0	0.0	0.0	0.0	0.0	0.0
C180.0	0.0	0.0	0.0	0.0	0.0	0.0	0.0	0.0	0.0	0.0
C210.0	0.0	0.0	0.0	0.0	0.0	0.0	0.0	0.0	0.0	0.0
C240.0	0.0	0.0	0.0	0.0	0.0	0.0	0.0	0.0	0.0	0.0
C270.0	0.0	0.0	0.0	0.0	0.0	0.0	0.0	0.0	0.0	0.0
C300.0	0.0	0.0	0.0	0.0	0.0	0.0	0.0	0.0	0.0	0.0
C330.0	0.0	0.0	0.0	0.0	0.0	0.0	0.0	0.0	0.0	0.0
C360.0	0.0	0.0	0.0	0.0	0.0	0.0	0.0	0.0	0.0	0.0
C\G	G70.0	G71.0	G72.0	G73.0	G74.0	G75.0	G76.0	G77.0	G78.0	G79.0
C0.0	0.0	0.0	0.0	0.0	0.0	0.0	0.0	0.0	0.0	0.0
C30.0	0.0	0.0	0.0	0.0	0.0	0.0	0.0	0.0	0.0	0.0
C60.0	0.0	0.0	0.0	0.0	0.0	0.0	0.0	0.0	0.0	0.0
C90.0	0.0	0.0	0.0	0.0	0.0	0.0	0.0	0.0	0.0	0.0
C120.0	0.0	0.0	0.0	0.0	0.0	0.0	0.0	0.0	0.0	0.0
C150.0	0.0	0.0	0.0	0.0	0.0	0.0	0.0	0.0	0.0	0.0
C180.0	0.0	0.0	0.0	0.0	0.0	0.0	0.0	0.0	0.0	0.0
C210.0	0.0	0.0	0.0	0.0	0.0	0.0	0.0	0.0	0.0	0.0
C240.0	0.0	0.0	0.0	0.0	0.0	0.0	0.0	0.0	0.0	0.0
C270.0	0.0	0.0	0.0	0.0	0.0	0.0	0.0	0.0	0.0	0.0
C300.0	0.0	0.0	0.0	0.0	0.0	0.0	0.0	0.0	0.0	0.0
C330.0	0.0	0.0	0.0	0.0	0.0	0.0	0.0	0.0	0.0	0.0
C360.0	0.0	0.0	0.0	0.0	0.0	0.0	0.0	0.0	0.0	0.0
C\G	G80.0	G81.0	G82.0	G83.0	G84.0	G85.0	G86.0	G87.0	G88.0	G89.0
C0.0	0.0	0.0	0.0	0.0	0.0	0.0	0.0	0.0	0.0	0.0
C30.0	0.0	0.0	0.0	0.0	0.0	0.0	0.0	0.0	0.0	0.0
C60.0	0.0	0.0	0.0	0.0	0.0	0.0	0.0	0.0	0.0	0.0
C90.0	0.0	0.0	0.0	0.0	0.0	0.0	0.0	0.0	0.0	0.0
C120.0	0.0	0.0	0.0	0.0	0.0	0.0	0.0	0.0	0.0	0.0
C150.0	0.0	0.0	0.0	0.0	0.0	0.0	0.0	0.0	0.0	0.0
C180.0	0.0	0.0	0.0	0.0	0.0	0.0	0.0	0.0	0.0	0.0
C210.0	0.0	0.0	0.0	0.0	0.0	0.0	0.0	0.0	0.0	0.0
C240.0	0.0	0.0	0.0	0.0	0.0	0.0	0.0	0.0	0.0	0.0
C270.0	0.0	0.0	0.0	0.0	0.0	0.0	0.0	0.0	0.0	0.0
C300.0	0.0	0.0	0.0	0.0	0.0	0.0	0.0	0.0	0.0	0.0
C330.0	0.0	0.0	0.0	0.0	0.0	0.0	0.0	0.0	0.0	0.0
C360.0	0.0	0.0	0.0	0.0	0.0	0.0	0.0	0.0	0.0	0.0



光强分布数据表格 单位[cd]

C\G	G90.0									
C0.0	0.0									
C30.0	0.0									
C60.0	0.0									
C90.0	0.0									
C120.0	0.0									
C150.0	0.0									
C180.0	0.0									
C210.0	0.0									
C240.0	0.0									
C270.0	0.0									
C300.0	0.0									
C330.0	0.0									
C360.0	0.0									



环带光通分布数据表

Gamma [°]	平均光强 [cd]	环带光通 [lm]	累积光通 [lm]	环带光通 [%]	累积光通 [%]
0.0	2570.53	0.00	0.00	0.00	0.00
0.0-1.0	2563.17	2.46	2.46	0.22	0.22
1.0-2.0	2537.40	7.32	9.78	0.66	0.89
2.0-3.0	2497.31	12.04	21.82	1.09	1.98
3.0-4.0	2439.79	16.53	38.34	1.50	3.48
4.0-5.0	2372.79	20.70	59.05	1.88	5.36
5.0-6.0	2292.49	24.52	83.57	2.22	7.58
6.0-7.0	2208.04	27.93	111.50	2.53	10.11
7.0-8.0	2117.70	30.96	142.46	2.81	12.92
8.0-9.0	2021.65	33.55	176.01	3.04	15.97
9.0-10.0	1921.71	35.69	211.69	3.24	19.20
10.0-11.0	1822.53	37.41	249.10	3.39	22.60
11.0-12.0	1723.81	38.77	287.87	3.52	26.11
12.0-13.0	1618.54	39.67	327.54	3.60	29.71
13.0-14.0	1520.91	40.18	367.72	3.65	33.36
14.0-15.0	1421.50	40.39	408.12	3.66	37.02
15.0-16.0	1327.87	40.29	448.40	3.65	40.68
16.0-17.0	1237.89	39.96	488.36	3.62	44.30
17.0-18.0	1149.09	39.36	527.71	3.57	47.87
18.0-19.0	1064.71	38.52	566.23	3.49	51.37
19.0-20.0	991.01	37.63	603.85	3.41	54.78
20.0-21.0	916.28	36.62	640.48	3.32	58.10
21.0-22.0	845.60	35.41	675.88	3.21	61.31
22.0-23.0	778.99	34.09	709.97	3.09	64.41
23.0-24.0	716.42	32.69	742.67	2.97	67.37
24.0-25.0	657.86	31.25	773.91	2.83	70.21
25.0-26.0	601.26	29.72	803.64	2.70	72.90
26.0-27.0	550.54	28.18	831.82	2.56	75.46
27.0-28.0	500.58	26.61	858.43	2.41	77.87
28.0-29.0	455.68	25.02	883.45	2.27	80.14
29.0-30.0	413.64	23.47	906.92	2.13	82.27
30.0-31.0	373.60	21.91	928.83	1.99	84.26
31.0-32.0	338.11	20.39	949.21	1.85	86.11
32.0-33.0	303.38	18.90	968.11	1.71	87.82
33.0-34.0	272.08	17.41	985.53	1.58	89.40
34.0-35.0	242.34	15.98	1001.50	1.45	90.85
35.0-36.0	216.18	14.60	1016.10	1.32	92.18
36.0-37.0	191.34	13.29	1029.39	1.21	93.38
37.0-38.0	168.76	12.02	1041.41	1.09	94.47
38.0-39.0	146.18	10.75	1052.16	0.98	95.45
39.0-40.0	126.48	9.51	1061.67	0.86	96.31

**GZAILITELED**

简洁 舒适 柔和

广州艾丽特光电科技有限公司
广州市花都区镜湖大道33号财富工业园

www.ailiteled.com

TEL: +86-020-36933476

第 7 页

环带光通分布数据表

Gamma [°]	平均光强 [cd]	环带光通 [lm]	累积光通 [lm]	环带光通 [%]	累积光通 [%]
40.0-41.0	107.55	8.33	1070.01	0.76	97.07
41.0-42.0	89.38	7.15	1077.16	0.65	97.72
42.0-43.0	74.78	6.08	1083.24	0.55	98.27
43.0-44.0	59.43	5.07	1088.31	0.46	98.73
44.0-45.0	47.43	4.11	1092.41	0.37	99.10
45.0-46.0	37.08	3.31	1095.72	0.30	99.40
46.0-47.0	25.45	2.49	1098.21	0.23	99.63
47.0-48.0	16.35	1.69	1099.90	0.15	99.78
48.0-49.0	10.30	1.09	1100.99	0.10	99.88
49.0-50.0	7.12	0.73	1101.72	0.07	99.94
50.0-51.0	2.85	0.42	1102.14	0.04	99.98
51.0-52.0	0.97	0.16	1102.30	0.01	100.00
52.0-53.0	0.00	0.04	1102.34	0.00	100.00
53.0-54.0	0.00	0.00	1102.34	0.00	100.00
54.0-55.0	0.00	0.00	1102.34	0.00	100.00
55.0-56.0	0.00	0.00	1102.34	0.00	100.00
56.0-57.0	0.00	0.00	1102.34	0.00	100.00
57.0-58.0	0.00	0.00	1102.34	0.00	100.00
58.0-59.0	0.00	0.00	1102.34	0.00	100.00
59.0-60.0	0.00	0.00	1102.34	0.00	100.00
60.0-61.0	0.00	0.00	1102.34	0.00	100.00
61.0-62.0	0.00	0.00	1102.34	0.00	100.00
62.0-63.0	0.00	0.00	1102.34	0.00	100.00
63.0-64.0	0.00	0.00	1102.34	0.00	100.00
64.0-65.0	0.00	0.00	1102.34	0.00	100.00
65.0-66.0	0.00	0.00	1102.34	0.00	100.00
66.0-67.0	0.00	0.00	1102.34	0.00	100.00
67.0-68.0	0.00	0.00	1102.34	0.00	100.00
68.0-69.0	0.00	0.00	1102.34	0.00	100.00
69.0-70.0	0.00	0.00	1102.34	0.00	100.00
70.0-71.0	0.00	0.00	1102.34	0.00	100.00
71.0-72.0	0.00	0.00	1102.34	0.00	100.00
72.0-73.0	0.00	0.00	1102.34	0.00	100.00
73.0-74.0	0.00	0.00	1102.34	0.00	100.00
74.0-75.0	0.00	0.00	1102.34	0.00	100.00
75.0-76.0	0.00	0.00	1102.34	0.00	100.00
76.0-77.0	0.00	0.00	1102.34	0.00	100.00
77.0-78.0	0.00	0.00	1102.34	0.00	100.00
78.0-79.0	0.00	0.00	1102.34	0.00	100.00
79.0-80.0	0.00	0.00	1102.34	0.00	100.00
80.0-81.0	0.00	0.00	1102.34	0.00	100.00



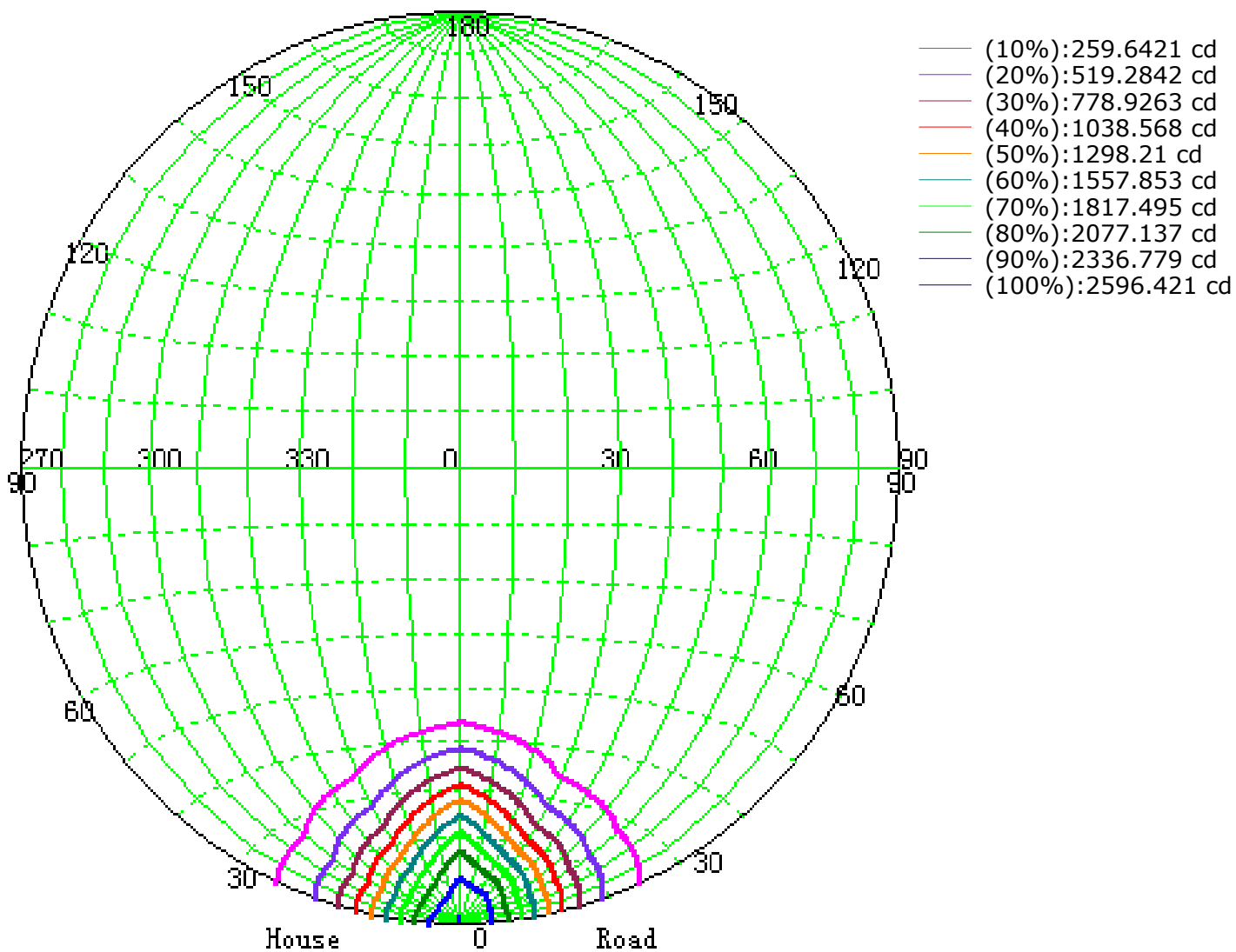
第 8 页

环带光通分布数据表

[illegible]



道路灯具等光强曲线 (圆形网图)



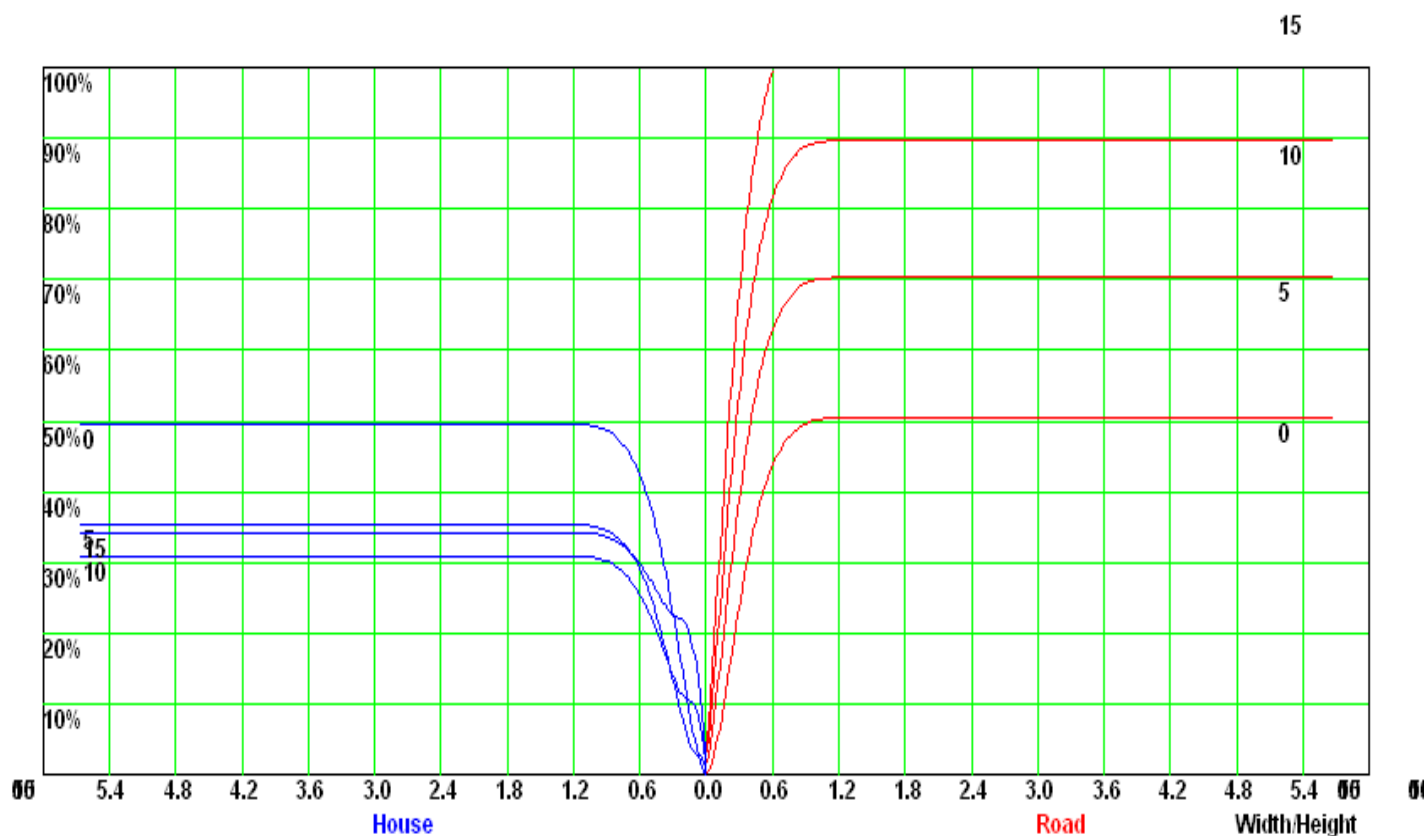


GZAILITELED

简洁 舒适 柔和

广州艾丽特光电科技有限公司
广州市花都区镜湖大道33号财富工业园
www.ailiteled.com
TEL: +86-020-36933476

道路灯具利用系数曲线





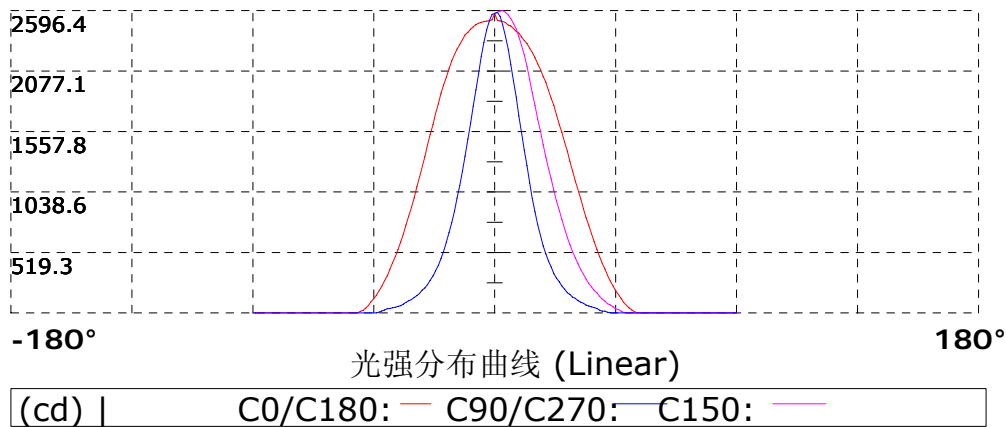
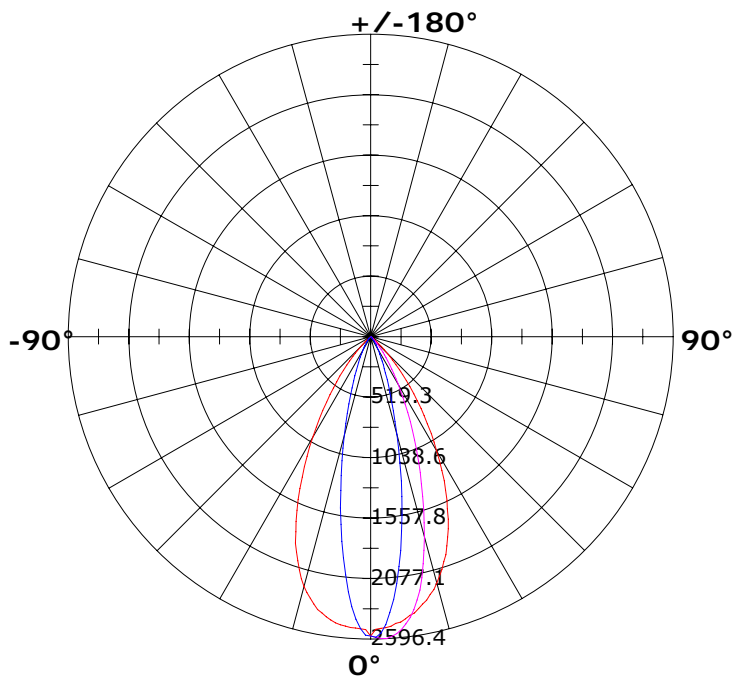
GZAILITELED

简洁 舒适 柔和

广州艾丽特光电科技有限公司
广州市花都区镜湖大道33号财富工业园
www.ailiteled.com
TEL: +86-020-36933476

光强分布曲线 【单位: cd】

第 11 页





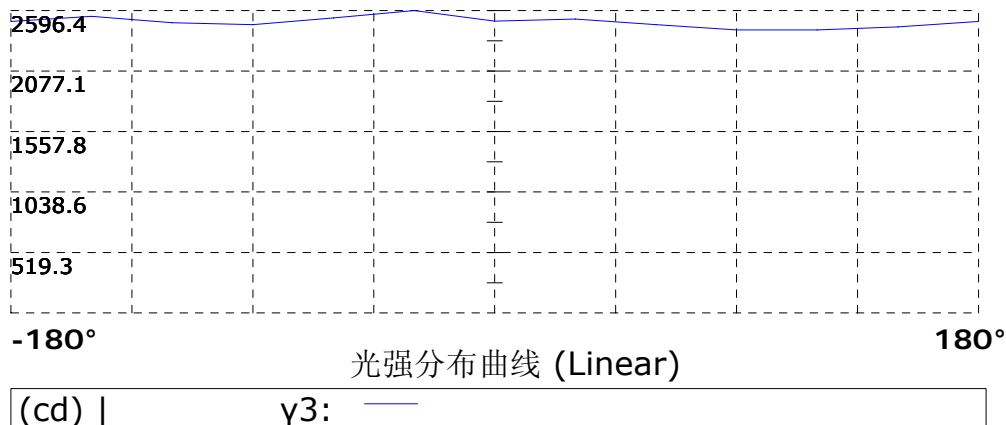
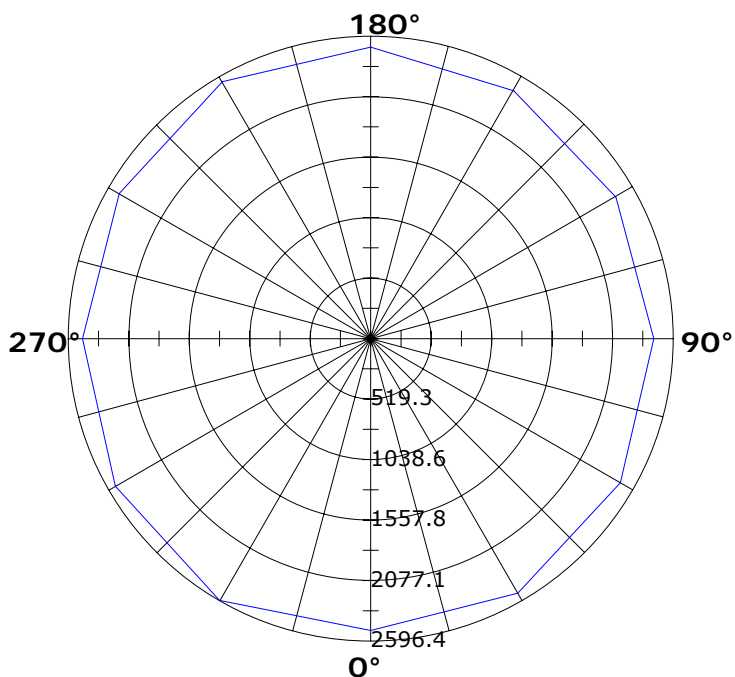
GZAILITELED

简洁 舒适 柔和

广州艾丽特光电科技有限公司
广州市花都区镜湖大道33号财富工业园
www.ailiteled.com
TEL: +86-020-36933476

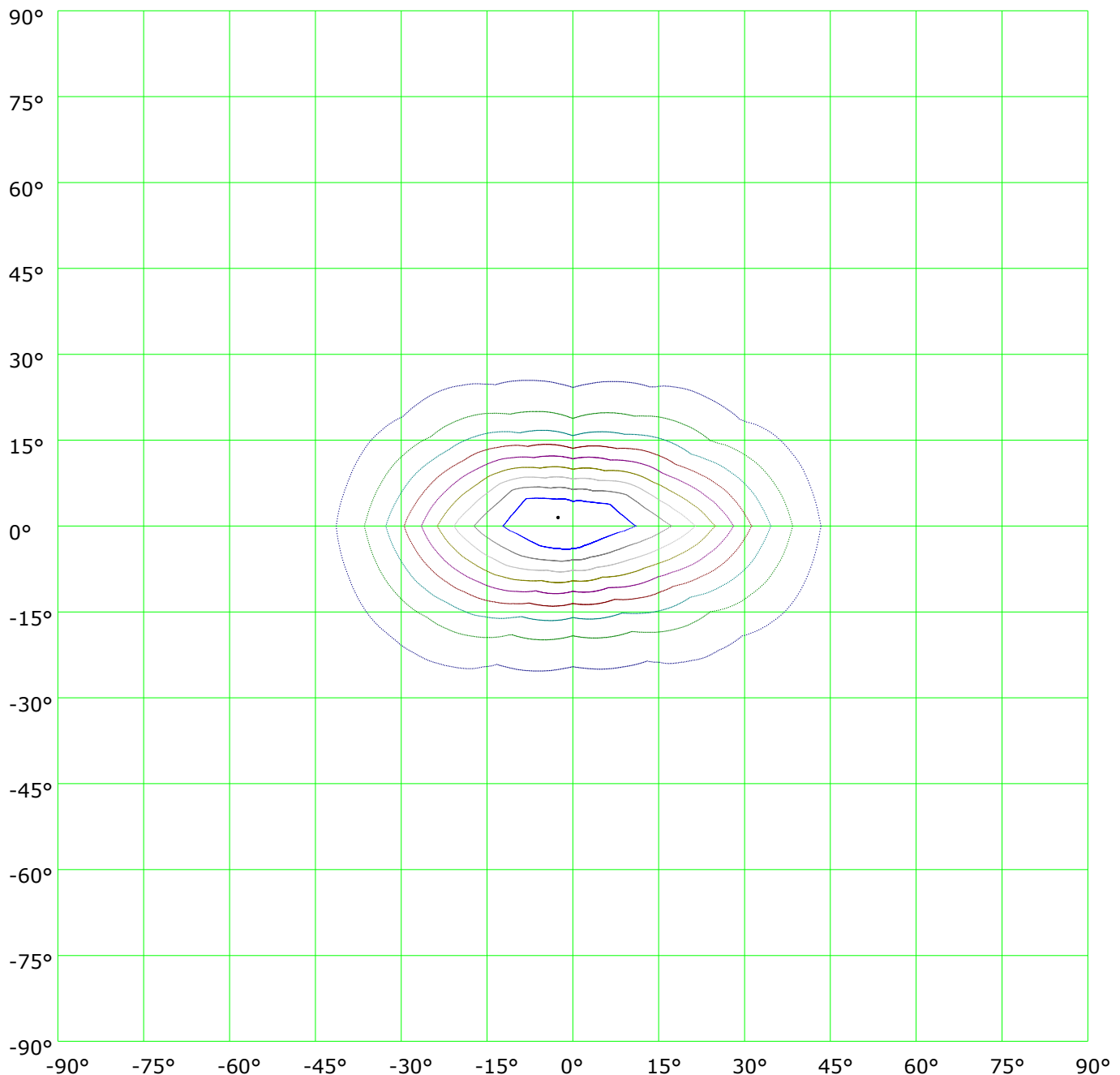
最大锥面光强分布曲线 [单位: cd]

第 12 页





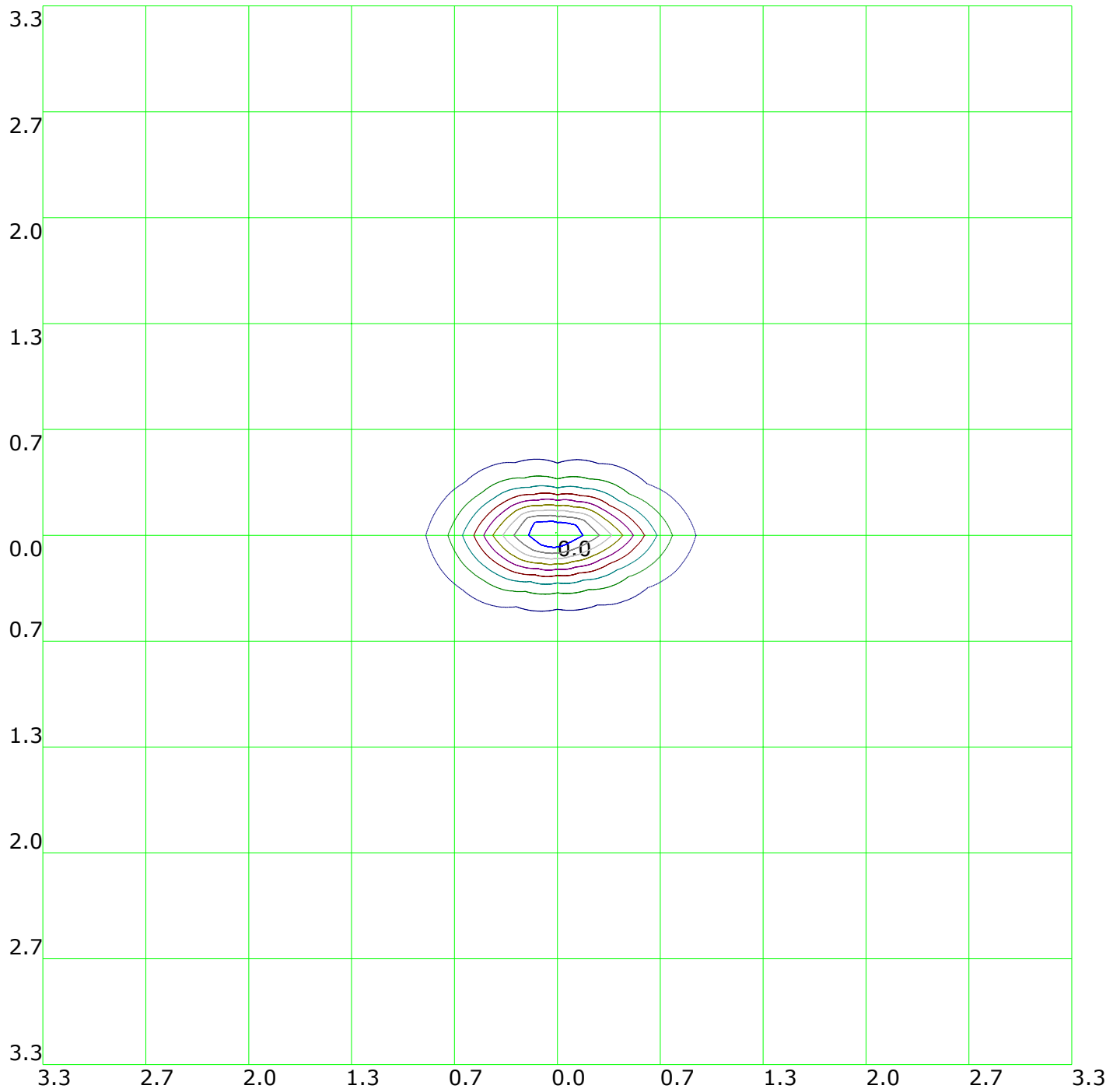
等光强曲线(矩形网图)



(10%): 259.6cd	(20%): 519.3cd	(30%): 778.9cd	(40%): 1038.6cd
(50%): 1298.2cd	(60%): 1557.9cd	(70%): 1817.5cd	(80%): 2077.1cd
(90%): 2336.8cd	(100%): 2596.4cd		



相对平面等照度曲线

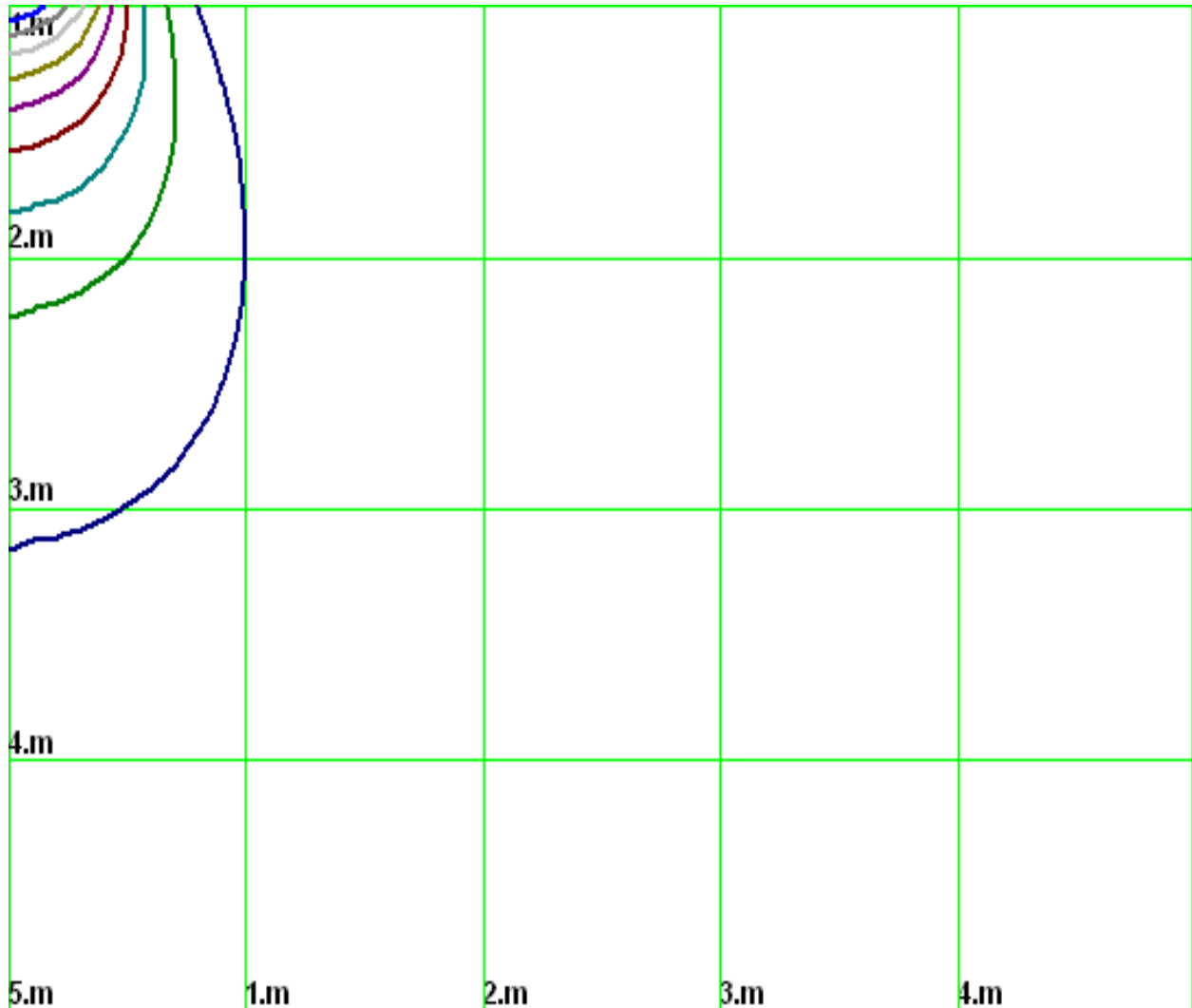


高度: 1 m

(10%): 259.6lx	(20%): 519.3lx	(30%): 778.9lx	(40%): 1038.6lx
(50%): 1298.2lx	(60%): 1557.9lx	(70%): 1817.5lx	(80%): 2077.1lx
(90%): 2336.8lx	(100%): 2593.8lx		



空间等照度曲线



(10%): 259.6lx	(20%): 519.3lx	(30%): 778.9lx	(40%): 1038.6lx
(50%): 1298.2lx	(60%): 1557.9lx	(70%): 1817.5lx	(80%): 2077.1lx
(90%): 2336.8lx	(100%): 2593.8lx		



亮度限制曲线（无发光侧边灯具）

直径：1000mm

长度：1000mm

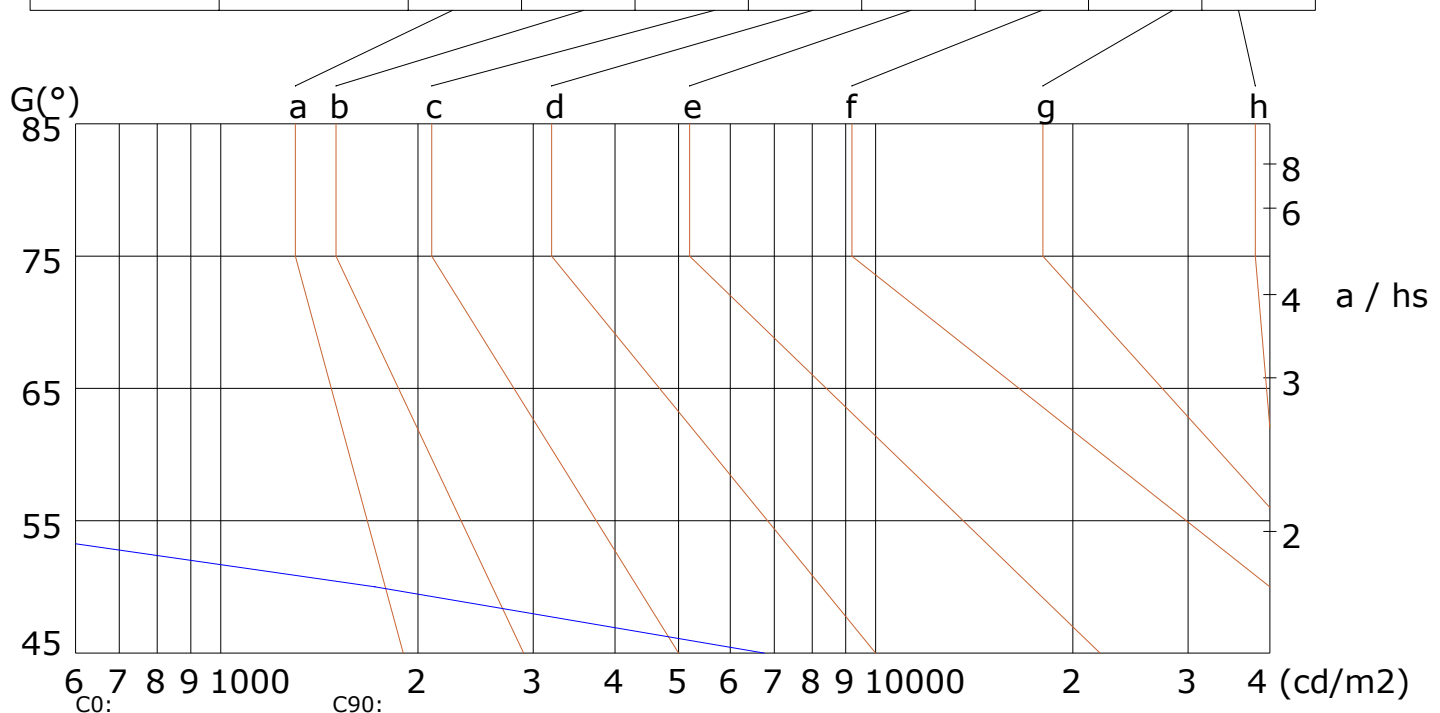
宽度：32mm

高度：70mm

(cd/m²)

γ	45°	50°	55°	60°	65°	70°	75°	80°	85°
C0	0	0							
C90	6757	1719							

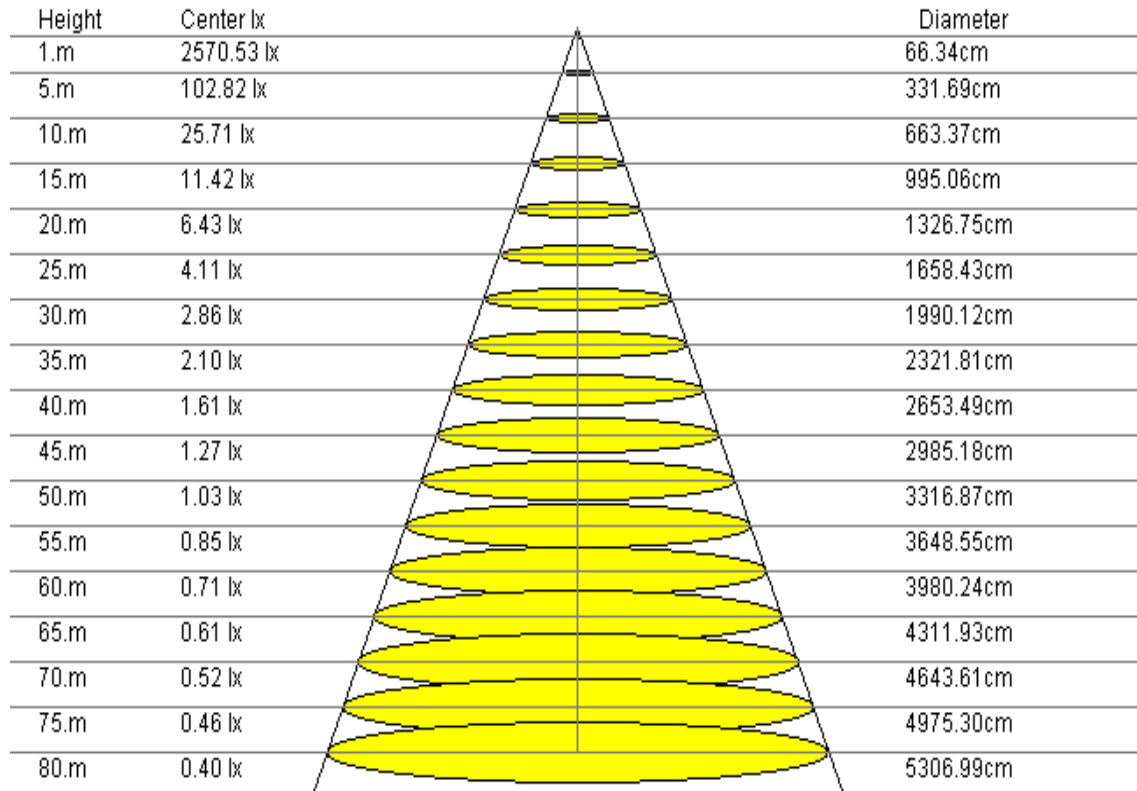
眩光等级	质量等级	使用照度 (lx)							
1.15	A	2000	1000	500	≤300				
1.5	B		2000	1000	500	≤300			
1.85	C			2000	1000	500	≤300		
2.2	D				2000	1000	500	≤300	
2.55	E					2000	1000	500	≤300



亮度限制曲线 (C0/C90)



照度距离关系曲线



光束角:36.70°(50%Imax)

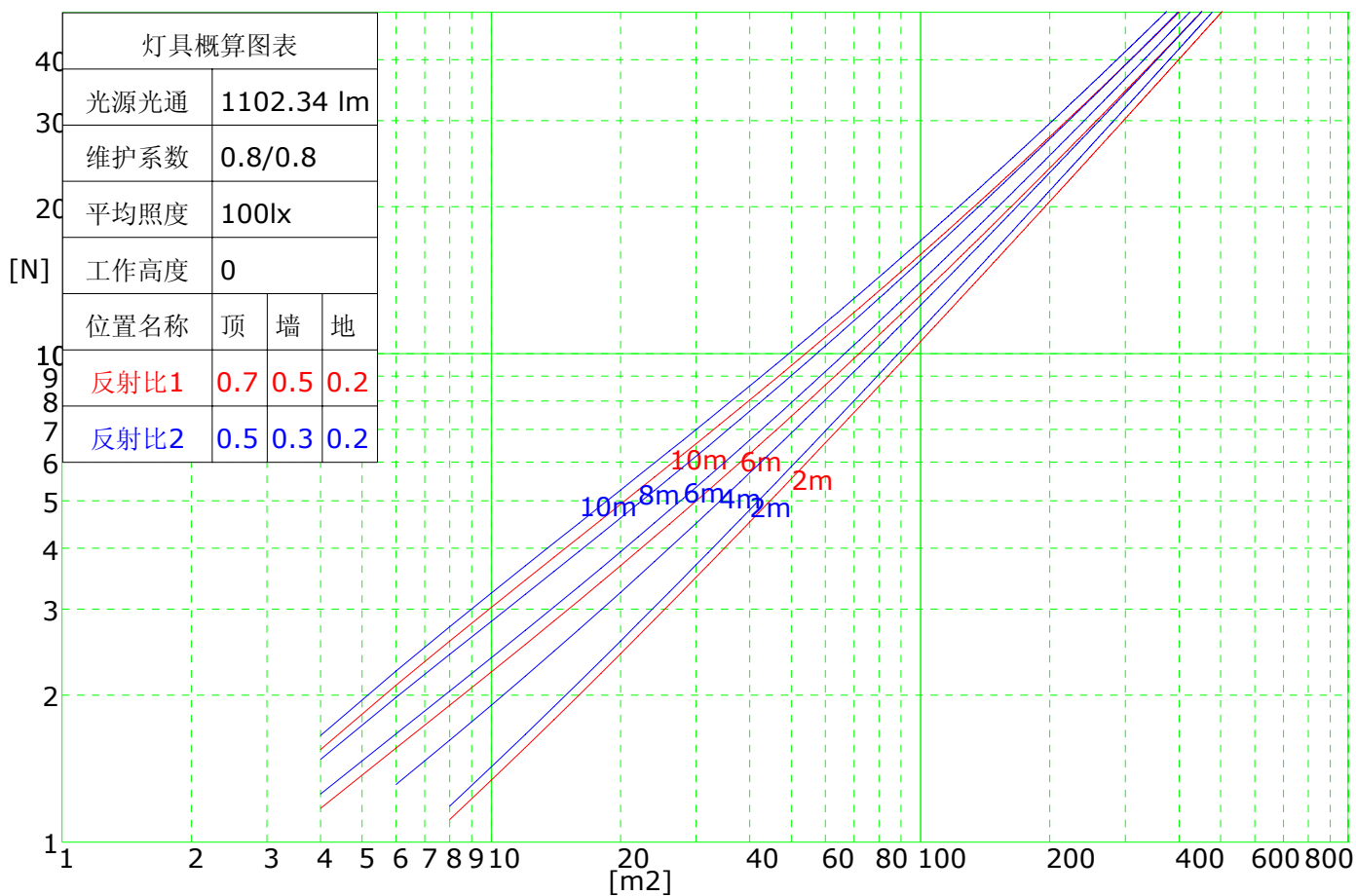


室内灯具利用系数表

RHOCC	80			70			50			30			10			0
RHOW	50	30	10	50	30	10	50	30	10	50	30	10	50	30	10	0
RCR	COEFFICIENTS OF UTILIZATION FOR RHOFC=20															
0	1.19	1.19	1.19	1.16	1.16	1.16	1.11	1.11	1.11	1.06	1.06	1.06	1.02	1.02	1.02	1.00
1	1.15	1.15	1.14	1.14	1.13	1.12	1.09	1.08	1.07	1.04	1.02	1.02	0.96	0.95	0.94	0.89
2	1.09	1.08	1.08	1.08	1.06	1.05	1.04	1.02	1.01	0.99	0.97	0.95	0.93	0.91	0.89	0.84
3	1.04	1.02	1.02	1.02	1.01	0.99	0.99	0.97	0.95	0.94	0.92	0.90	0.89	0.86	0.84	0.80
4	0.98	0.97	0.96	0.97	0.95	0.94	0.94	0.91	0.90	0.90	0.87	0.85	0.85	0.82	0.80	0.75
5	0.93	0.92	0.91	0.92	0.90	0.89	0.89	0.87	0.85	0.86	0.83	0.80	0.82	0.78	0.76	0.72
6	0.89	0.87	0.87	0.88	0.86	0.85	0.85	0.82	0.80	0.82	0.79	0.76	0.79	0.75	0.72	0.68
7	0.85	0.83	0.82	0.83	0.82	0.80	0.81	0.78	0.76	0.78	0.75	0.72	0.75	0.71	0.68	0.65
8	0.81	0.79	0.78	0.80	0.78	0.77	0.78	0.75	0.73	0.75	0.72	0.69	0.72	0.68	0.65	0.62
9	0.77	0.76	0.75	0.76	0.74	0.73	0.74	0.71	0.70	0.72	0.68	0.66	0.69	0.65	0.62	0.59
10	0.74	0.72	0.72	0.73	0.71	0.70	0.71	0.68	0.66	0.69	0.65	0.63	0.67	0.63	0.59	0.56



室内灯具概算曲线图表





UGR综合眩光指数表

Ceiling		70	70	50	50	30	70	70	50	50	30
Wall		50	30	50	30	30	50	30	50	30	30
Floor		20	20	20	20	20	20	20	20	20	20
Room Size		Weft to light axis direction of observation					Direction of light axis parallel observation				
2H	2H	13.1	14.2	13.3	14.1	14.6	13.0	14.1	13.1	14.2	14.7
	3H	14.5	15.5	14.8	15.9	15.9	14.3	15.4	14.6	15.8	15.9
	4H	15.0	16.1	15.4	16.6	16.7	15.0	16.0	15.4	16.4	16.7
	6H	15.7	16.4	16.0	16.8	16.8	15.5	16.3	15.8	16.8	16.9
	8H	15.8	16.7	16.0	16.9	17.1	15.7	16.6	15.9	16.8	17.1
	12H	15.9	16.7	16.1	17.0	17.3	15.7	16.6	16.1	17.0	17.4
4H	2H	13.9	14.7	14.1	14.9	15.1	13.9	14.7	14.0	15.0	15.0
	3H	15.5	16.4	15.7	16.3	16.7	15.4	16.2	15.6	16.3	16.6
	4H	16.2	16.8	16.4	16.9	17.3	16.0	16.8	16.3	16.9	17.4
	6H	16.7	17.3	17.0	17.5	17.9	16.6	17.3	16.8	17.5	17.8
	8H	16.8	17.5	17.2	17.7	18.0	16.9	17.3	17.1	17.7	18.0
	12H	17.1	17.6	17.4	17.8	18.2	17.0	17.5	17.3	17.8	18.1
8H	4H	16.4	17.0	16.7	17.2	17.6	16.4	17.0	16.6	17.3	17.6
	6H	17.1	17.6	17.5	17.9	18.3	17.0	17.5	17.4	17.9	18.2
	8H	17.6	17.9	17.9	18.2	18.5	17.4	17.8	17.9	18.1	18.7
	12H	17.8	18.1	18.1	18.5	18.7	17.5	18.0	18.0	18.5	18.8
12H	4H	16.5	17.1	16.9	17.4	17.6	16.4	16.9	16.8	17.2	17.6
	6H	17.3	17.8	17.7	17.9	18.4	17.2	17.7	17.6	17.9	18.3
	8H	17.6	18.0	18.1	18.2	18.7	17.5	17.9	18.0	18.3	18.7